



RUNNING  CYCLING

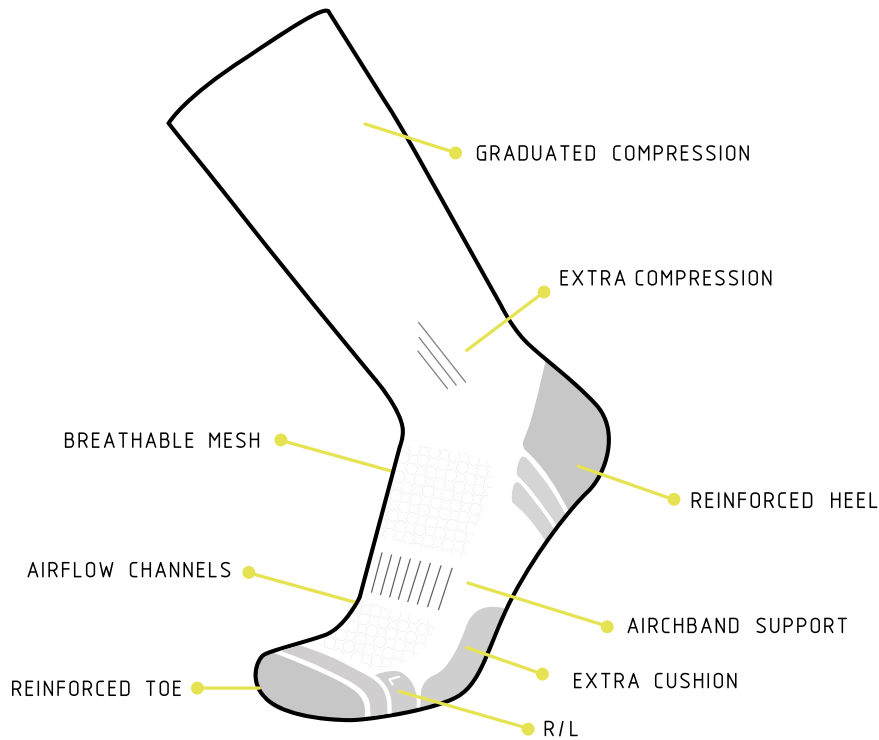
*Pacific*  
AND COLORS.

Pacific and Co. was founded in Barcelona [EST.2013] to give a new vision to performance socks, taking them as a canvas to unleash creativity and express an active lifestyle. Ethically produced with sustainable materials. Made in Spain & Portugal by a team of textile experts that guarantee quality & comfort. Designed by artists, tested by athletes. **Let us inspire your steps.**

# PERFORMANCE SOCKS

Our ultimate lightweight technical crew sock. The fabric properties, optimised mesh, extracushion and knitting texture is engineered to fit perfectly for performance activity. With extra breathability and comfy features to be part of you while running, riding or walking the city. Take closer look to see the difference.

H I G H P E R F O R M A N C E



## AIRFLOW

T E C H N O L O G Y

Exclusive structure designed for a maximum ventilation for half time and hot seasons. High quality threads like Tactel, NylCare, SoftAir and Coolmax bring the sock the best materials for each exercise.

## EXTRACUSHION

O N T H E M O V E

More protection against impacts. Shock-absorber cushion at the sole for a complete comfy experience.

## VENTILATION MESH

I N S T E P

New mesh areas instep to give an even greater feeling of lightness and comfort. Ventilation zones make the socks more breathable, by removing humidity and moisture quicker.

## AIRCHBANDFIT

S T A B I L I T Y

Airchband support offers mid-foot stability for a better fit. Prevents sliding moves during activity. Located in the arch of the foot, it also provides for venous return and recovery.

## LEFT/RIGHT

D I S T I N C T I O N

Right/left sock distinction to adapt the design to each foot shape for an optimum comfort and adaptability.





## HERE NOW (Lavender)

Made with high quality polyamide yarn, they guarantee perfect performance and a high humidity evacuation. Reinforced knitting at the pressure points of the foot to ensure total absorption of vibration and shock. Light mesh for a maximum breathability levels and motivational message on the back.

**SIZES** S-M | L-XL    **95% POLYAMIDE | 5% ELASTHANE**



AIRFLOW  
TECHNOLOGY



LIGHTWEIGHT  
YARN



AIRCHBAND  
SUPPORT



## HERE NOW (White)

Made with high quality polyamide yarn, they guarantee perfect performance and a high humidity evacuation. Reinforced knitting at the pressure points of the foot to ensure total absorption of vibration and shock. Light mesh for a maximum breathability levels and motivational message on the back.

**SIZES** S-M | L-XL    **95% POLYAMIDE | 5% ELASTHANE**



AIRFLOW  
TECHNOLOGY



LIGHTWEIGHT  
YARN



AIRCHBAND  
SUPPORT



## HERE NOW (Turquoise)

Made with high quality polyamide yarn, they guarantee perfect performance and a high humidity evacuation. Reinforced knitting at the pressure points of the foot to ensure total absorption of vibration and shock. Light mesh for a maximum breathability levels and motivational message on the back.

**SIZES** S-M | L-XL

**95% POLYAMIDE | 5% ELASTHANE**



AIRFLOW TECHNOLOGY



LIGHTWEIGHT YARN



AIRCHBAND SUPPORT



## CALL ME (White)

Made with high quality polyamide yarn, they guarantee perfect performance and a high humidity evacuation. Reinforced knitting at the pressure points of the foot to ensure total absorption of vibration and shock. Light mesh for a maximum breathability levels and motivational message on the back.

**SIZES** S-M | L-XL

**95% POLYAMIDE | 5% ELASTHANE**



AIRFLOW TECHNOLOGY



LIGHTWEIGHT YARN



AIRCHBAND SUPPORT



COLOR CODE: 853 NEON  
SERIE: PERFORMANCE  
HIGH RUNNING



BUNNING SOCKS SERIES  
PERFORMANCE SOCKS  
NOW AVAILABLE



*Pacific*  
AND COLORS.

NEW

NEW



## CALL ME (Neon Yellow)

## CALL ME (Neon Orange)

Made with high quality polyamide yarn, they guarantee perfect performance and a high humidity evacuation. Reinforced knitting at the pressure points of the foot to ensure total absorption of vibration and shock. Light mesh for a maximum breathability levels and motivational message on the back.

Made with high quality polyamide yarn, they guarantee perfect performance and a high humidity evacuation. Reinforced knitting at the pressure points of the foot to ensure total absorption of vibration and shock. Light mesh for a maximum breathability levels and motivational message on the back.

SIZES S-M | L-XL

95% POLYAMIDE | 5% ELASTHANE

SIZES S-M | L-XL

95% POLYAMIDE | 5% ELASTHANE



AIRFLOW TECHNOLOGY



LIGHTWEIGHT YARN



AIRCHBAND SUPPORT



AIRFLOW TECHNOLOGY



LIGHTWEIGHT YARN



AIRCHBAND SUPPORT

**NEW**



### WAKE UP (Sea)

Made with high quality polyamide yarn, they guarantee perfect performance and a high humidity evacuation. Reinforced knitting at the pressure points of the foot to ensure total absorption of vibration and shock. Light mesh for a maximum breathability levels and motivational message on the back.

**SIZES** S-M | L-XL    ● ● ● 95% POLYAMIDE | 5% ELASTHANE



AIRFLOW TECHNOLOGY



LIGHTWEIGHT YARN



AIRCHBAND SUPPORT

**NEW**



### WAKE UP (Tree)

Made with high quality polyamide yarn, they guarantee perfect performance and a high humidity evacuation. Reinforced knitting at the pressure points of the foot to ensure total absorption of vibration and shock. Light mesh for a maximum breathability levels and motivational message on the back.

**SIZES** S-M | L-XL    ● ● ● 95% POLYAMIDE | 5% ELASTHANE



AIRFLOW TECHNOLOGY



LIGHTWEIGHT YARN



AIRCHBAND SUPPORT



NEW



NEW



NEW



### PEACE (Lavender)

Made with high quality polyamide yarn, they guarantee perfect performance and a high humidity evacuation. Reinforced knitting at the pressure points of the foot to ensure total absorption of vibration and shock. Light mesh for a maximum breathability levels and motivational message on the back.

SIZES **S-M** | L-XL    9 % POLYAMIDE | % ELASTHANE



AIRFLOW TECHNOLOGY



LIGHTWEIGHT YARN



AIRCHBAND SUPPORT

### PEACE (Peach)

Made with high quality polyamide yarn, they guarantee perfect performance and a high humidity evacuation. Reinforced knitting at the pressure points of the foot to ensure total absorption of vibration and shock. Light mesh for a maximum breathability levels and motivational message on the back.

SIZES **S-M** | L-XL    9 % POLYAMIDE | % ELASTHANE



AIRFLOW TECHNOLOGY



LIGHTWEIGHT YARN



AIRCHBAND SUPPORT

### PEACE (Lavender)

Made with high quality polyamide yarn, they guarantee perfect performance and a high humidity evacuation. Reinforced knitting at the pressure points of the foot to ensure total absorption of vibration and shock. Light mesh for a maximum breathability levels and motivational message on the back.

SIZES **S-M** | L-XL    9 % POLYAMIDE | % ELASTHANE



AIRFLOW TECHNOLOGY



LIGHTWEIGHT YARN



AIRCHBAND SUPPORT





Pacific

PACIFIC AND CO. X PITUFOLLOW



NEW



### ANYTIME (BW)

Made with high quality polyamide yarn, they guarantee perfect performance and a high humidity evacuation. Reinforced knitting at the pressure points of the foot to ensure total absorption of vibration and shock. Light mesh for a maximum breathability levels and motivational message on the back.

SIZES S-M | L-XL

95% POLYAMIDE | 5% ELASTHANE



AIRFLOW TECHNOLOGY



LIGHTWEIGHT YARN



AIRBAND SUPPORT



**SMILE RUN (Aubergine)**

Go for a run and enjoy the freedom, the good company, the music, the effort ... That should be the main objective when you put on your socks, press start and start your training. SMILE & RUN!

**SMILE RUN (Neon)**

Go for a run and enjoy the freedom, the good company, the music, the effort ... That should be the main objective when you put on your socks, press start and start your training. SMILE & RUN!

**SIZES** S-M | L-XL

**95% POLYAMIDE | 5% ELASTHANE**



AIRFLOW TECHNOLOGY



LIGHTWEIGHT YARN



AIRCHBAND SUPPORT





### SMILE RUN (White)

Go for a run and enjoy the freedom, the good company, the music, the effort ... That should be the main objective when you put on your socks, press start and start your training. SMILE & RUN!



### SMILE RUN (Turquoise)

Go for a run and enjoy the freedom, the good company, the music, the effort ... That should be the main objective when you put on your socks, press start and start your training. SMILE & RUN!

SIZES **S-M** | **L-XL**

95% POLYAMIDE | 5% ELASTHANE



AIRFLOW  
TECHNOLOGY



LIGHTWEIGHT  
YARN



AIRBAND  
SUPPORT



### FOR PLEASURE (Black)

We came to the world to enjoy, to have a good time. We do sports to share the passion and emotions with those who sweat until the last drop. Doing it for pleasure is our satisfaction.



### FOR PLEASURE (White)

We came to the world to enjoy, to have a good time. We do sports to share the passion and emotions with those who sweat until the last drop. Doing it for pleasure is our satisfaction.

**SIZES** S-M | L-XL    **95% POLYAMIDE | 5% ELASTHANE**



AIRFLOW TECHNOLOGY



LIGHTWEIGHT YARN



AIRCHBAND SUPPORT





### FASTER (Mint)

When somebody behind you is panting like a dog, looking for your wheel and taking advantage of your energy, make it clear that if he can see your socks, it is because you are faster. Once this point is clear, give gas and continue enjoying the landscape. Designed to train and compete in hot and humid climates, Pacific and Co. performance cycling socks are designed for maximum breathability levels. Made with Polyamide yarn, they guarantee comfort and a high humidity evacuation and total absorption of vibration and shock.

**SIZES** S-M | L-XL

**95% POLYAMIDE | 5% ELASTHANE**



AIRFLOW TECHNOLOGY



LIGHTWEIGHT YARN



AIRBAND SUPPORT



### FASTER (Coral)

When somebody behind you is panting like a dog, looking for your wheel and taking advantage of your energy, make it clear that if he can see your socks, it is because you are faster. Once this point is clear, give gas and continue enjoying the landscape. Designed to train and compete in hot and humid climates, Pacific and Co. performance cycling socks are designed for maximum breathability levels. Made with Polyamide yarn, they guarantee comfort and a high humidity evacuation and total absorption of vibration and shock.

**SIZES** S-M | L-XL

**95% POLYAMIDE | 5% ELASTHANE**



AIRFLOW TECHNOLOGY



LIGHTWEIGHT YARN



AIRBAND SUPPORT



## ONE PLANET

There are thousands of planets, but none like Earth. It has given us a place to live and enjoy life, a place with dreamlike landscapes and incredible animals. We have to be grateful and show our love by taking care and respect it at all times. Love mum nature!

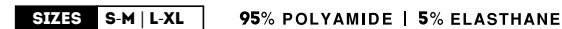
Made ethically hand to hand with local and small suppliers from Barcelona. We love to work on products respectful with the planet. In this case we manufactured these socks with 80% Recycled polyamide yarn.



## FORREST RUN

Who hasn't ever said that famous phrase "Run Forrest, run!?" These words turned into a motto for runners, and for those who miss the bus. We may not be able to run 3 years in a row like Forrest, but we can overcome a Marathon with these nostalgic socks.

Made with high quality polyamide yarn, they guarantee perfect performance and a high humidity evacuation. Reinforced knitting at the pressure points of the foot to ensure total absorption of vibration and shock. Light mesh for a maximum breathability levels and motivational message on the back.





### DON'T QUIT (White)

Winning should not be the only objective, in failure there is also triumph. Win, lose, learn but never give up. DO IT for you.

Made with high quality polyamide yarn, they guarantee high humidity evacuation. Reinforced knitting at the pressure points of the foot to ensure total absorption of vibration and shock. Light mesh for a maximum breathability levels.

**SIZES** S-M | L-XL    **94% POLYAMIDE | 6% ELASTHANE**



### DON'T QUIT (Neon)

Winning should not be the only objective, in failure there is also triumph. Win, lose, learn but never give up. DO IT for you.

Made with high quality polyamide yarn, they guarantee high humidity evacuation. Reinforced knitting at the pressure points of the foot to ensure total absorption of vibration and shock. Light mesh for a maximum breathability levels.

**SIZES** S-M | L-XL    **94% POLYAMIDE | 6% ELASTHANE**



### DON'T QUIT (Neon)

Winning should not be the only objective, in failure there is also triumph. Win, lose, learn but never give up. DO IT for you.

Made with high quality polyamide yarn, they guarantee high humidity evacuation. Reinforced knitting at the pressure points of the foot to ensure total absorption of vibration and shock. Light mesh for a maximum breathability levels.

**SIZES** S-M | L-XL    **94% POLYAMIDE | 6% ELASTHANE**









### GOOD VIBES (Aubergine)

Made with high quality polyamide yarn, they guarantee perfect performance and a high humidity evacuation. Reinforced knitting at the pressure points of the foot to ensure total absorption of vibration and shock. Light mesh for a maximum breathability levels and motivational message on the back.

**SIZES** S-M | L-XL    95% POLYAMIDE | 5% ELASTHANE



### GOOD VIBES (Turquoise)

Made with high quality polyamide yarn, they guarantee perfect performance and a high humidity evacuation. Reinforced knitting at the pressure points of the foot to ensure total absorption of vibration and shock. Light mesh for a maximum breathability levels and motivational message on the back.

**SIZES** S-M | L-XL    95% POLYAMIDE | 5% ELASTHANE



### GOOD VIBES (White)

Made with high quality polyamide yarn, they guarantee perfect performance and a high humidity evacuation. Reinforced knitting at the pressure points of the foot to ensure total absorption of vibration and shock. Light mesh for a maximum breathability levels and motivational message on the back.

**SIZES** S-M | L-XL    95% POLYAMIDE | 5% ELASTHANE





### GOOD VIBES (Lake)

Made with high quality polyamide yarn, they guarantee perfect performance and a high humidity evacuation. Reinforced knitting at the pressure points of the foot to ensure total absorption of vibration and shock. Light mesh for a maximum breathability levels and motivational message on the back.

**SIZES** S-M | L-XL **95% POLYAMIDE | 5% ELASTHANE**



AIRFLOW  
TECHNOLOGY



LIGHTWEIGHT  
YARN



AIRCHBAND  
SUPPORT



### GOOD VIBES (Orange)

Made with high quality polyamide yarn, they guarantee perfect performance and a high humidity evacuation. Reinforced knitting at the pressure points of the foot to ensure total absorption of vibration and shock. Light mesh for a maximum breathability levels and motivational message on the back.

**SIZES** S-M | L-XL **95% POLYAMIDE | 5% ELASTHANE**



AIRFLOW  
TECHNOLOGY



LIGHTWEIGHT  
YARN



AIRCHBAND  
SUPPORT



### COFFEE CLUB (Pink)

If you don't mind what time, if you are those who ask about the origin, the type and roast, if you always taste it without sugar...you are part of the club! Shout with us: Coffee! yes! Always! Anytime! Made with high quality polyamide yarn, they guarantee perfect performance and a high humidity evacuation.

**SIZES** S-M | L-XL **95% POLYAMIDE | 5% ELASTHANE**



AIRFLOW  
TECHNOLOGY



LIGHTWEIGHT  
YARN



AIRCHBAND  
SUPPORT



### STAY STRONG (Black)

In life, as in a race, there are complicated roads we must go through. Staying strong is the key to reach the goal and say to the world that you achieve it again.

Made with high quality polyamide yarn, they guarantee perfect performance and a high humidity evacuation. Reinforced knitting at the pressure points of the foot to ensure total absorption of vibration and shock. Light mesh for a maximum breathability levels and motivational message on the back.

**SIZES** S-M | L-XL    **95% POLYAMIDE | 5% ELASTHANE**



AIRFLOW TECHNOLOGY



LIGHTWEIGHT YARN



AIRCHBAND SUPPORT



### STAY STRONG (Neon Yellow)

In life, as in a race, there are complicated roads we must go through. Staying strong is the key to reach the goal and say to the world that you achieve it again.

Made with high quality polyamide yarn, they guarantee perfect performance and a high humidity evacuation. Reinforced knitting at the pressure points of the foot to ensure total absorption of vibration and shock. Light mesh for a maximum breathability levels and motivational message on the back.

**SIZES** S-M | L-XL    **95% POLYAMIDE | 5% ELASTHANE**



AIRFLOW TECHNOLOGY



LIGHTWEIGHT YARN



AIRCHBAND SUPPORT



### CLOUDS (Blue)

### CLOUDS (Red)

When you run or ride a bike and you feel like you're flying, you've reached the maximum level of enjoyment. Now you are ready to dive into the clouds, the limit is the sky.

When you run or ride a bike and you feel like you're flying, you've reached the maximum level of enjoyment. Now you are ready to dive into the clouds, the limit is the sky.

**SIZES** S-M | L-XL

95% POLYAMIDE | 5% ELASTHANE



AIRFLOW TECHNOLOGY



LIGHTWEIGHT YARN



AIRCHBAND SUPPORT





## MIAMI VICE

We all have a little demon inside that tempts and incites us to sin. A rebellious child who likes chaos, freedom, old school tattoos and being rich without working. This is Miami Vice, do you dare to feel it?

Designed to train and compete in hot and humid climates, Pacific and Co. performance cycling socks are designed for maximum breathability levels. Reinforced heel and toe for a total absorption of vibration and shock.

SIZES **S-M** | **L-XL**

94% POLYAMIDE | 6% ELASTHAN



AIRFLOW TECHNOLOGY



LIGHTWEIGHT YARN



AIRCHBAND SUPPORT



## RIDE IN PEACE (Olive)

We ride on two wheels to work, shopping, meetings, gym,... it is our best ally. Cars, however, are the enemy we have to live with. So we arm ourselves with patience and calm to enjoy our favorite transport. Blessed bicycle!

Made with high quality polyamide yarn, they guarantee perfect performance and a high humidity evacuation. Reinforced knitting at the pressure points of the foot to ensure total absorption of vibration and shock. Light mesh for a maximum breathability levels and motivational message on the back.

SIZES **S-M** | **L-XL**

94% POLYAMIDE | 6% ELASTHANE



AIRFLOW TECHNOLOGY



LIGHTWEIGHT YARN



AIRCHBAND SUPPORT





### RIDE IN PEACE (Black)

We ride on two wheels to work, shopping, meetings, gym,... it is our best ally. Cars, however, are the enemy we have to live with. So we arm ourselves with patience and calm to enjoy our favorite transport. Blessed bicycle!

Made with high quality polyamide yarn, they guarantee perfect performance and a high humidity evacuation. Reinforced knitting at the pressure points of the foot to ensure total absorption of vibration and shock. Light mesh for a maximum breathability levels and motivational message on the back.

**SIZES** S-M | L-XL    **95% POLYAMIDE | 5% ELASTHANE**



AIRFLOW  
TECHNOLOGY



LIGHTWEIGHT  
YARN



AIRCHBAND  
SUPPORT



### RIDE IN PEACE (White)

We ride on two wheels to work, shopping, meetings, gym,... it is our best ally. Cars, however, are the enemy we have to live with. So we arm ourselves with patience and calm to enjoy our favorite transport. Blessed bicycle!

Made with high quality polyamide yarn, they guarantee perfect performance and a high humidity evacuation. Reinforced knitting at the pressure points of the foot to ensure total absorption of vibration and shock. Light mesh for a maximum breathability levels and motivational message on the back.

**SIZES** S-M | L-XL    **95% POLYAMIDE | 5% ELASTHANE**



AIRFLOW  
TECHNOLOGY



LIGHTWEIGHT  
YARN



AIRCHBAND  
SUPPORT



### RIDE IN PEACE (Navy)

We ride on two wheels to work, shopping, meetings, gym,... it is our best ally. Cars, however, are the enemy we have to live with. So we arm ourselves with patience and calm to enjoy our favorite transport. Blessed bicycle!

Made with high quality polyamide yarn, they guarantee perfect performance and a high humidity evacuation. Reinforced knitting at the pressure points of the foot to ensure total absorption of vibration and shock. Light mesh for a maximum breathability levels and motivational message on the back.

**SIZES** S-M | L-XL    **94% POLYAMIDE | 6% ELASTHANE**



AIRFLOW TECHNOLOGY



LIGHTWEIGHT YARN



AIRBAND SUPPORT



### RIDE IN PEACE (Sky)

We ride on two wheels to work, shopping, meetings, gym,... it is our best ally. Cars, however, are the enemy we have to live with. So we arm ourselves with patience and calm to enjoy our favorite transport. Blessed bicycle!

Made with high quality polyamide yarn, they guarantee perfect performance and a high humidity evacuation. Reinforced knitting at the pressure points of the foot to ensure total absorption of vibration and shock. Light mesh for a maximum breathability levels and motivational message on the back.

**SIZES** S-M | L-XL    **94% POLYAMIDE | 6% ELASTHANE**



AIRFLOW TECHNOLOGY



LIGHTWEIGHT YARN



AIRBAND SUPPORT





# New Styles

COOLMAX SOCKS



## CREATIVE PRINT SOCKS

Presenting the full Coolmax socks range with original and creative designs. Each season we dedicate a hub to create synergy with artists around the globe. Illustrators, muralists, tattoo artists has collaborated with us to create unique socks with their original style. A piece of art on your feet.



*Pacific*<sup>™</sup>  
AND COLORS.





New styles made by Creative Artists. Manufactured in Barcelona with CoolMax® and cotton fabrics. Check out our range of creative socks for uncommon individuals.

**సరికొక్క**



**TRASHART**

80% | COOLMAX®  
10% | COTTON  
06% | NYLON  
04% | ELASTIC

SIZES | S-M | L-XL

Designed by artist:

**BIGOTE SUCIO**



**KRASHKID**

80% | COOLMAX®  
10% | COTTON  
06% | NYLON  
04% | ELASTIC

SIZES | S-M | L-XL

Designed by artist:

**KRASHKID**



**DREAMY**

80% | COOLMAX®  
10% | COTTON  
06% | NYLON  
04% | ELASTIC

SIZES | S-M | L-XL

Designed by artist:

**STEVEN FRITTERS**



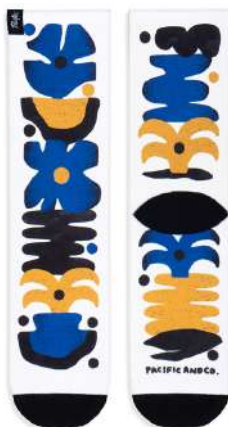


### TOTEM

80% ICoolMax®  
10% ICOTTON  
06% INYLON  
04% I ELASTIC

SIZES | S-M | L-XL

NEW



### NATURE

80% ICoolMax®  
10% ICOTTON  
06% INYLON  
04% I ELASTIC

SIZES | S-M | L-XL

NEW



### ANCESTRAL

80% ICoolMax®  
10% ICOTTON  
06% INYLON  
04% I ELASTIC

SIZES | S-M | L-XL

NEW



Pacific and Co.® Inspiring your steps.  
Designed by artists. Made in Barcelona.





**THIJMEN** by **THIJMEN GELUK**

Socks designed by artist Thijmen Geluk. With a fun and urban style, Thijmen completes this design with a soft and elegant color palette that will perfectly match your style.



80% | CoolMax®  
10% | COTTON  
06% | NYLON  
04% | ELASTIC

COOLMAX®

SIZES S-M | L-XL



**SATURN** by **SATURN**

Socks designed by artist SATURN. With a colorful style, Saturn highlights concepts such as the eye, the hand and the stars in this design. Ancestral motifs that are very recurrent in his work.



80% | CoolMax®  
10% | COTTON  
06% | NYLON  
04% | ELASTIC

COOLMAX®

SIZES S-M | L-XL





### JASPER by **JASPER**

Socks designed by the german tattoo artist JASPER. With his particular style loaded with symbolism, Jasper works with lines and earth colors, which makes these socks a 'must' in your looks.



80% COOLMAX®  
10% COTTON  
06% NYLON  
04% ELASTIC

COOLMAX®

SIZES S | M | L | XL



### FLASHY by **JDELCASTILLO**

Flashy socks designed by tattoo artist Jesús del Castillo. Recognized for the traditional style, the tattooer gives fresh and striking colors to his designs that makes his pieces unique.



80% COOLMAX®  
10% COTTON  
06% NYLON  
04% ELASTIC

COOLMAX®

SIZES S | M | L | XL



Pacific

# BE YOU

MARCO OGGIAN

2 SOCKS + 1 EXCLUSIVE PIN  
DESIGNED BY MARCO OGGIAN



## BE YOU GIFT BOX [ LIMITED EDITION BOX ]

BE YOU GIFT BOX is an exclusive box designed by the talented Italian artist Marco Oggian. Inside you will find BE YOU & BLINKIN' EYE socks + EXCLUSIVE PIN. [Limited Edition 200u.]

[Limited Edition Artist Box]

SIZES S-M | L-XL



## BE YOU by MARCO OGGIAN

'Many times we hide behind masks because we are afraid of what people think about us. Don't stop being who you really are! Express yourself with the new BE YOU' design by the artist Marco Oggian.

80% | CoolMax®  
10% | COTTON  
06% | NYLON  
04% | ELASTIC

CODE MAX®

SIZES S-M | L-XL



## BLINKIN' EYE by MARCO OGGIAN

'The human being is imperfect by nature, and this is what makes us human. We have the vision and the strength to correct mistakes and become a better person in a blinking eye.' by Marco Oggian.

80% | CoolMax®  
10% | COTTON  
06% | NYLON  
04% | ELASTIC

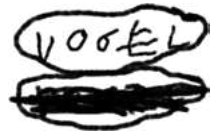
CODE MAX®

SIZES S-M | L-XL



Pacific  
AND COLORS.

x



2 SOCKS + 1 EXCLUSIVE PIN  
DESIGNED BY ALÍCIA VOGEL

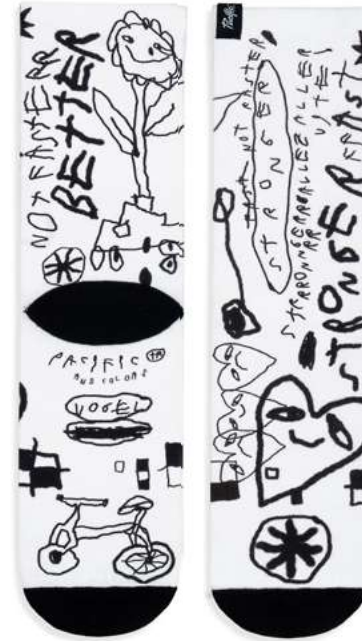


### VOGEL GIFT BOX [ARTIST EDITION BOX]

VOGEL GIFT BOX is an exclusive box designed by the talented Spanish artist Alícia Vogel. Inside you will find two creative pairs of socks + EXCLUSIVE PIN designed by the artist. [Limited Edition]

[Limited Edition Artist Box]

SIZES S-M | L-XL



### VOGEL (Blanc)

Vogel was inspired by optimistic messages making use of his characteristic 'unlearned calligraphy' and various symbolisms that embrace the error in the stroke.

80% | CoolMax®  
10% | COTTON  
06% | NYLON  
04% | ELASTIC

COOLMAX®

SIZES S-M | L-XL



### VOGEL (Noir)

Vogel was inspired by optimistic messages making use of his characteristic 'unlearned calligraphy' and various symbolisms that embrace the error in the stroke.

80% | CoolMax®  
10% | COTTON  
06% | NYLON  
04% | ELASTIC

COOLMAX®

SIZES S-M | L-XL





**OSAKA** by **RION**

Rion, a tattoo artist settled in Barcelona who has her own style, fun with a touch of kawaii style. The Osaka socks, are a parade of japanese delicacies to which the artist gives personality and that is what makes them endearing.



80% | CoolMax®  
10% | COTTON  
06% | NYLON  
04% | ELASTIC

COOLMAX®

SIZES S-M | L-XL



**LOLA** by *Paola Fernandez*

Paola Fernandez, a tattoo artist based in Granada designed Lola. This traditional tattoo style presents itself like an explosion of love, pain and passion. Lola socks represent the classical figures of old school, authentic and traditional tattoo.



80% | CoolMax®  
10% | COTTON  
06% | NYLON  
04% | ELASTIC

COOLMAX®

SIZES S-M | L-XL







### NOHMEN by DISCOR SL

The NOHMEN socks are part of the capsule collection TATTOO SERIES, the new socks in collaboration with three Tattoo Artists from Barcelona. Is Cisco Ksl, with a Japanese style, the one who makes tribute to Japanese mythology and culture.



80% | CoolMax®  
10% | COTTON  
06% | NYLON  
04% | ELASTIC

COOLMAX®

SIZES S-M | L-XL



### ROAR by ALVARO ALONSO

The ROAR socks are part of the capsule collection TATTOO SERIES, the new socks in collaboration with three Tattoo Artists from Barcelona. In this case, Alvaro Alonso, with a Neo-Traditional style, gives the savage touch to the collection.



80% | CoolMax®  
10% | COTTON  
06% | NYLON  
04% | ELASTIC

COOLMAX®

SIZES S-M | L-XL



### SKULL by Chuli Gonzalez

The SKULL socks are part of the capsule collection TATTOO SERIES, the new socks in collaboration with three Tattoo Artists from Barcelona. Here is Chuli Gonzalez, giving the a dark and classy touch to the collection with a clean Traditional tattoo.



80% | CoolMax®  
10% | COTTON  
06% | NYLON  
04% | ELASTIC

COOLMAX®

SIZES S-M | L-XL



**BACOA CATS** *by Anana*

Bacoa Colors is our new socks collaboration with Bacoa and the artist Anana. The love for our city, Barcelona, and its urban culture has brought us together to cook on low these socks for you.



80% I CoolMax®  
10% I COTTON  
06% I NYLON  
04% I ELASTIC

COOL MAX®

SIZES S-M | L-XL



**BACOA COLORS** *by Anana*

Designed by Anana, these socks represents what we imagine inside a 'Burger city': cats, flowers, factories, a girl walking her dogs and of course burgers! ... Long live to the imagination!



80% I CoolMax®  
10% I COTTON  
06% I NYLON  
04% I ELASTIC

COOL MAX®

SIZES S-M | L-XL



**ACID COLORS**

Chaos appears when normality ends, you break with everything and begin your own path. Acid is the art in this chaos, something to discover, the hidden beauty that only you can understand.



80% I CoolMax®  
10% I COTTON  
06% I NYLON  
04% I ELASTIC

COOL MAX®

SIZES S-M | L-XL



**ACID B&W**

Chaos appears when normality ends, you break with everything and begin your own path. Acid is the art in this chaos, something to discover, the hidden beauty that only you can understand.



80% I CoolMax®  
10% I COTTON  
06% I NYLON  
04% I ELASTIC

COOL MAX®

SIZES S-M | L-XL



**LOVELY MARTIANS**

We thought that aliens were ugly, green and that they were coming for us, until we met these endearing Martians. Since then, we have all wanted to have them close to hug them. ET stay here, my house is your house!



80% | CoolMax®  
 10% | COTTON  
 06% | NYLON  
 04% | ELASTIC

COOLMAX®

SIZES S-M | L-XL



**FOREVER YOUNG**

This design is a tribute to our beloved 90s culture. Michael Jackson and ET united as a symbol of an era that, both in music and in cinema, marked a before and after in our kids memories.



80% | CoolMax®  
 10% | COTTON  
 06% | NYLON  
 04% | ELASTIC

COOLMAX®

SIZES S-M | L-XL



**FAST FOOD**

Pizza, burgers, tacos, chips... Let's not let these delicacies go down in history. You must eat healthy, but remember that they were always there when you were most hungry. Choose Fast food socks and preserve the legacy!



80% | CoolMax®  
 10% | COTTON  
 06% | NYLON  
 04% | ELASTIC

COOLMAX®

SIZES S-M | L-XL



**ETERNO**

With a colorful and minimalistic aesthetic style, Nacho Eterno's graffitis and tatoos are inspired by ancient cultures; mexican and african art. Get a piece of his imaginary full of animals and colors.

Designed by:



80% | CoolMax®  
10% | COTTON  
06% | NYLON  
04% | ELASTIC



SIZES S-M | L-XL



**COSMIC**

The important part of Venya's work is a street art, made always with spray cans and markers. He use our socks to create a cosmic landscape with ufo, aliens, robots and astronauts.

Designed by:



80% | CoolMax®  
10% | COTTON  
06% | NYLON  
04% | ELASTIC



SIZES S-M | L-XL



**NEKO**

This Cat is famous all around the world, Maneki Neko is known for his infinite salutes, being a symbol of luck in the japanese culture. Luck bonus for the owner of these socks!



80% | CoolMax®  
10% | COTTON  
06% | NYLON  
04% | ELASTIC



SIZES S-M | L-XL



**BOKU**

We are getting into Boku's World, a french illustrator that uses colors and forms based on nature as a base element in his works. Snakes, aligators, cats... Everything in a cartoon style keeps the smile on.



80% | CoolMax®  
10% | COTTON  
06% | NYLON  
04% | ELASTIC



SIZES S-M | L-XL



**SMILE CLUB**

Welcome to SMILE CLUB where all the moments that make us laugh have to be experienced, enjoyed and repeated. Bring a smile with you by wearing the new Smile Club socks!



**KALI**

Kali socks designed by the tattoo artist Viviana Calvo, represents two espiitual concepts: in the front a Thai Mask and in the back Kali, the goddess of death, time and doomsday.



**BAD HABITS**

Progress consists in renewing oneself, even if the change is not always to everyone's liking. Bad Habits is not a blow to classical art, but an allegory to the artistic and social revolution in which we live.



**RAD**

Those wonderful years, or what's the same: friends, the square, pizza and zero commitments. The RAD socks are the pill that will make you go back in time until the 80's to revisit those moments. Welcome!



80% | CoolMax®  
10% | COTTON  
06% | NYLON  
04% | ELASTIC



SIZES S-M | L-XL



80% | CoolMax®  
10% | COTTON  
06% | NYLON  
04% | ELASTIC



SIZES S-M | L-XL



80% | CoolMax®  
10% | COTTON  
06% | NYLON  
04% | ELASTIC



SIZES S-M | L-XL



80% | CoolMax®  
10% | COTTON  
06% | NYLON  
04% | ELASTIC



SIZES S-M | L-XL



**FRIDA**

Admiration for her talent and courage, and sadness for her bitter and harsh illness. This design is our tribute to the woman who transformed her pain into art, and her art in our need.

**SUMMERTIME**

"Summertime and the livin is easy!" Summer is our favorite season of the year and our guest artist Philip Morgan knows it! At the beach with friends having an ice cream ... easy life!



80% | CoolMax®  
10% | COTTON  
06% | NYLON  
04% | ELASTIC



SIZES S-M | L-XL



80% | CoolMax®  
10% | COTTON  
06% | NYLON  
04% | ELASTIC



SIZES S-M | L-XL



**MALAY**

We were inspired by one of the seven thousand islands of the Philippines to create Malay. An explosion of tropical leaves and flowers that are part of the exotic nature of this wonderful country.

**JELLYFISH**

It's true that jellyfish are not the most cute animal on the planet, but who wants to be cute when you can clone, rejuvenate and travel around the ocean? Be jellyfish, my friend!



80% | CoolMax®  
10% | COTTON  
06% | NYLON  
04% | ELASTIC



SIZES S-M | L-XL



80% | CoolMax®  
10% | COTTON  
06% | NYLON  
04% | ELASTIC



SIZES S-M | L-XL



## **GRAND TOURS BOX**

The gift box for Special Edition GRAND TOURS depicts the 3 Big Races and the colours of each tour: red (La Vuelta), pink (El Giro) and yellow (El Tour). The three pairs of socks that tribute each race can be discovered inside, showing these historical cyclist and anecdotes from the races.

If you have a friend that loves the world of cycling, this Grand Tours special edition would be an amazing and exclusive gift.



AIRFLOW  
TECHNOLOGY

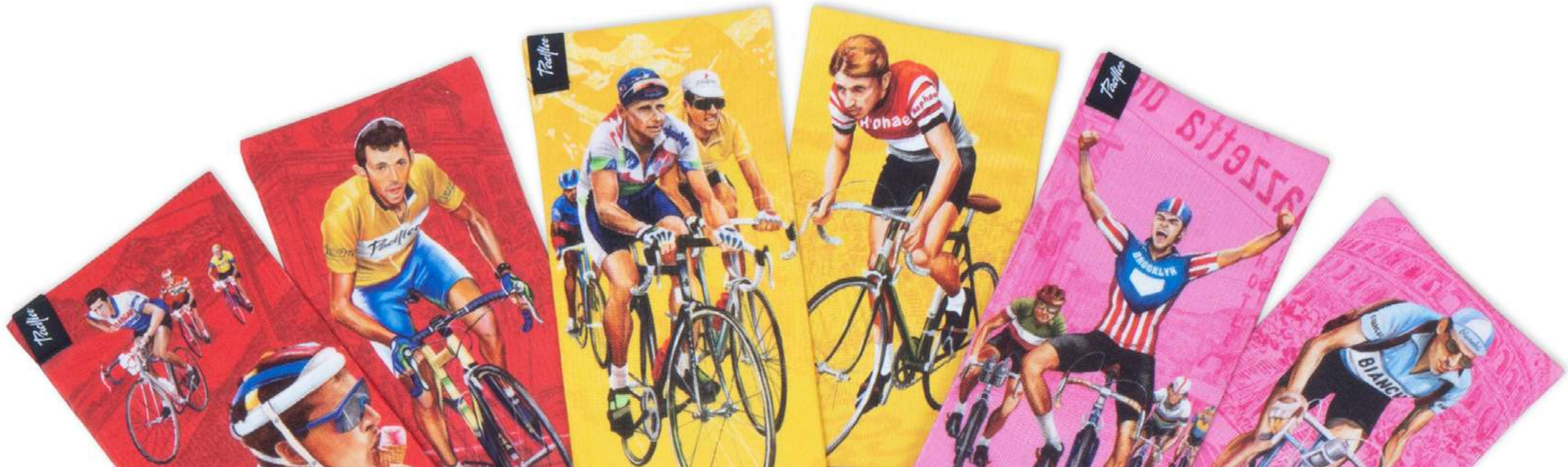


LIGHTWEIGHT  
YARN



AIRCHBAND  
SUPPORT

**SIZES S-M | L-XL**





## TOUR SOCKS 1909

In the socks tribute to "El Tour" we have selected Jacques Anqueti, often called "Maitre Jacques or Monsieur Crono", the five-time winner of The French Tour. On the front of these socks we have presented the famous In-durain descent that made Rominger so exhausted on the downhill of Tourmalet in 1993. We can't forget to mention "The Devil", the biggest supporter and leader that the cycling has had. Rest in peace Didi!

80% | CoolMax®  
10% | COTTON  
06% | NYLON  
04% | ELASTIC



## GIRO SOCKS 1909

For the socks that represent "El Giro", we have chosen the historical cyclist Fausto Coppi, also known as Il Campionissimo and five-times champion of the race. He is considered to be one of the best cyclists in history. That certainly warrants a tribute! On the front side of the socks, we can see the Brooklyn squad, which included Roger De Vlaeminck called "El Gitano" and Eddy Merckx.

80% | CoolMax®  
10% | COTTON  
06% | NYLON  
04% | ELASTIC



## VUELTA SOCKS 1935

In the socks tribute to "La Vuelta" we have chosen Roberto Heras, often called "the Spanish Climber" and the four-time winner of "La Vuelta a España". On the front of the sock, we can find Federico Martin Bahamontes, a two-time winner of the race, and Perico Delgado who is pictured eating an icecream which is a gesture to Bahamontes from the race in La Romeyre.

80% | CoolMax®  
10% | COTTON  
06% | NYLON  
04% | ELASTIC





# Cycling LEGENDS

by Pacific and Co.

Pacific and Co. presents Cycling Legends socks, as a tribute to those athletes who are part of cycling history. Outstanding spirit, no fear attitude & unique style. Three legends on two wheels. A piece of cycling culture now on your feet.



## GRAND LEGENDS BOX

Limited Edition Gift Box. Only 100 units. Contains 3 pairs of Cycling Legends socks as a tribute to those cyclist who are part of cycling history: Merckx, Indurain & Wiggins. Gift a present to the especial person who always talk to you about cycling.

80% | CoolMax®  
10% | COTTON  
06% | NYLON  
04% | ELASTIC

COOLMAX®

SIZES S-M | L-XL



## MERCKX

80% | CoolMax®  
10% | COTTON  
06% | NYLON  
04% | ELASTIC

COOLMAX®

SIZES S-M | L-XL



## WIGGINS

80% | CoolMax®  
10% | COTTON  
06% | NYLON  
04% | ELASTIC

COOLMAX®

SIZES S-M | L-XL



## INDURAIN

80% | CoolMax®  
10% | COTTON  
06% | NYLON  
04% | ELASTIC

COOLMAX®

SIZES S-M | L-XL

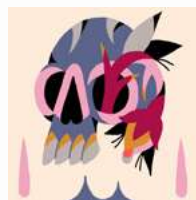


**WOMEN EXCLUSIVE**



**ROMANCE**

The well-known illustrator Maria Ruiz also participates in Pacific and Co with her beautiful design. They mix flowers, butterflies and skulls to create passion in the Romance socks.



*Women Exclusive*

80% | COOLMAX®  
10% | COTTON  
06% | NYLON  
04% | ELASTIC

COOLMAX®

SIZES S-M

[ LOW-CUT SOCKS ]

**WOMEN EXCLUSIVE**



**LOOK AT ME**

What's after that look is directly proportional to your desire to fu\*\* spread the peace in the world! Let them look without filters and do the same, Look at Me socks speaks for themselves.



*Women Exclusive*

80% | COOLMAX®  
10% | COTTON  
06% | NYLON  
04% | ELASTIC

COOLMAX®

SIZES S-M

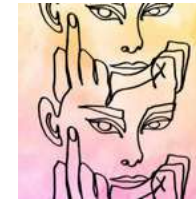
[ LOW-CUT SOCKS ]

**WOMEN EXCLUSIVE**



**FUCK YA**

When someone is explaining how wonderful is his life and just in this certain moment you decide to show him how wonderful your middle finger is, because it's the best that you can pay with. Fuckya!



*Women Exclusive*

80% | COOLMAX®  
10% | COTTON  
06% | NYLON  
04% | ELASTIC

COOLMAX®

SIZES S-M

[ LOW-CUT SOCKS ]

**WOMEN  
EXCLUSIVE**



**BOAVISTA PINK**

Tropical leaves and wild flowers have become a 'must' in our collections. On pastel pink background, Boa Vista Pink grows full of our favourite 'bird of paradise' plant.



*Women Exclusive*

80% | CoolMax®  
10% | COTTON  
06% | NYLON  
04% | ELASTIC



SIZES S-M

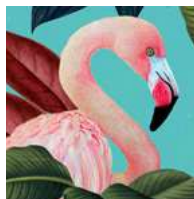
[ LOW-CUT SOCKS ]

**WOMEN  
EXCLUSIVE**



**FLAMINGO**

Nothing more refreshing than dipping your head into the water! These flamingos and their pink and turquoise tones will give you the fresh touch this summer season.



*Women Exclusive*

80% | CoolMax®  
10% | COTTON  
06% | NYLON  
04% | ELASTIC



SIZES S-M

[ LOW-CUT SOCKS ]

**WOMEN  
EXCLUSIVE**



**FREE THE NIPPLE**

With this design we want to defend the freedom of the woman's body and our right to exhibit it without criminalizing the women who do it. The same rights, the same freedoms! #freethenipple



*Women Exclusive*

80% | CoolMax®  
10% | COTTON  
06% | NYLON  
04% | ELASTIC



SIZES S-M

[ LOW-CUT SOCKS ]

**WOMEN  
EXCLUSIVE**



**BIRDIE**

Pink cockatoos resting among tropical leaves. This is Birdie. Maybe you have never seen before a pink cockatoo, but reality does not matter when you can imagine and paint the world as you want.



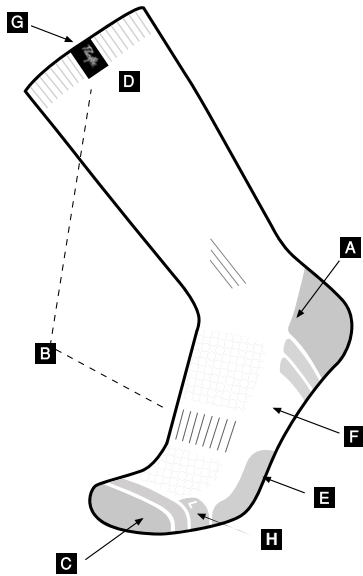
*Women Exclusive*

80% | CoolMax®  
10% | COTTON  
06% | NYLON  
04% | ELASTIC



SIZES S-M

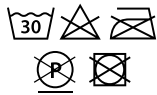
[ LOW-CUT SOCKS ]



**STRUCTURE**

- A** REINFORCED EXTRACUSHION.
- B** ELASTIC BAND.
- C** REINFORCED HEEL.
- D** BRAND LOGO.
- E** ANTI-IMPACT SOLES.
- F** SIGNATURE ON THE SOLE.
- G** ORIGINAL BRAND LABEL.
- H** LEFT/RIGHT SHAPE.

**WASHING**



We recommend washing machine at 30°C/86°F.  
Avoid bleaching and ironing socks.  
Socks will last far longer if you avoid the dryer.



**MADE IN BARCELONA**

Pacific and Co. manufactures high quality socks, making most of the knowledge and expertise of the traditional Spanish sock makers. All socks are made in Barcelona (Spain).

**SIZE CHART**

**S-M**  
**L-XL**

	EUR	US
S-M	37-41	5.5-8
L-XL	42-46	8.5-11



**DISPLAY**

**COUNTER DISPLAY**

**2 FACES COUNTER DISPLAY**  
**MEASURES:** 59cm x 50cm x 17cm  
**CAPACITY:** 36 PAIRS  
**MATERIAL:** PINE WOOD  
Hang max. 3 pairs in each nail.  
We recommend to expose S-M size.

**DISPLAY**

**DISPLAY STAND 4 WHEELS**

**2 FACES DISPLAY STAND**  
**MEASURES:** 50cm x 170cm x 50cm  
**CAPACITY:** 120 PAIRS  
**MATERIAL:** PINE WOOD  
2 MAGNET PHOTO KIT + 4 WHEELS  
Hang max. 4 pairs in each nail.  
We recommend to expose S-M size.

